

# The LAKELAND Collection



Edmund  
Bell



**MAIN IMAGE** Blind HAWKSHEAD Cornflower **Scatters** AMBLESIDE Cornflower CONISTON Latte WINDERMERE Cornflower DERWENT Cornflower **Chairs** METRO Ivory METRO Mist **Table Runner** MANHATTAN Pearl HAWKSHEAD Cornflower **Napkins** DERWENT Cornflower CONISTON Latte



# LAKELAND COLLECTION

Lakeland is a fresh, new collection of co-ordinating printed furnishing fabrics for the contract market. Inspired by the beauty of the British countryside and the changing seasons, the collection is a mix of contemporary, organic florals and subtle textures, creating a relaxed and stylish ambience for any interior.

Ambleside, the feature floral, is complimented by the delicate leaves and stems of Coniston and Windermere, giving a fashionable botanical feel. Contrast is provided in the form of the smart, textured stripe of Hawkshead and the small-scale geometric, Derwent.

All offered in range of 6 harmonious colourways and an extensive range of base fabrics.



**MAIN IMAGE** Curtain AMBLESIDE Duckegg Blind  
HAWKSHEAD Duckegg Scatters DERWENT Apple  
MANHATTAN Teal CONISTON Apple WINDERMERE  
Duckegg

Duckegg

# Heather



**MAIN IMAGE** Curtains WINDERMERE Heather Voile MOMENTS Mist Duvet AMBLESIDE Heather HAWKSHEAD Heather (reverse) Bed Runner MANHATTAN Lime Scatters HAWKSHEAD Heather AMBLESIDE Heather MANHATTAN Lime DERWENT Fern Chair METRO Ivory



## Raspberry

**MAIN IMAGE** Curtain CONISTON Mist  
 Blind HAWKSHEAD Raspberry  
 Scatters WINDERMERE Mist  
 MANHATTAN Plum CONISTON Mist/  
 HAWKSHEAD Raspberry **Throw**  
 MANHATTAN Plum



Gold



MAIN IMAGE Curtain AMBLESIDE Gold Blind DERWENT Pewter Chair METRO Onyx Scatters CONISTON Mist HAWKSHEAD Gold



**MAIN IMAGE** Curtain CONISTON Ochre Blind  
HAWKSHEAD Copper Scatters AMBLESIDE Copper  
WINDERMERE Pistachio MANHATTAN Coral DERWENT  
Copper

Copper



# Cornflower



**MAIN IMAGE** Blind HAWKSHEAD Cornflower **Scatters** AMBLESIDE Cornflower CONISTON Latte WINDERMERE Cornflower DERWENT Cornflower

# The LAKELAND Collection

**AMBLESIDE**  
 Pattern repeat:  
 H23.3cm x  
 V46.6cm half  
 drop



Duckegg



Gold



Raspberry



Heather



Copper



Cornflower

**CONISTON**  
 Pattern repeat:  
 H17.5cm x  
 V17.5cm



Apple



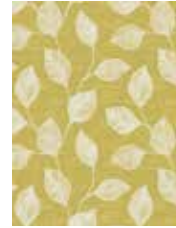
Pewter



Mist



Fern



Ochre



Latte

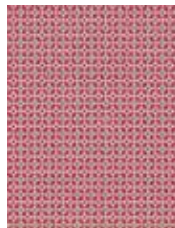
**DERWENT**  
 Pattern repeat:  
 H23.3cm x  
 V23.5cm



Apple



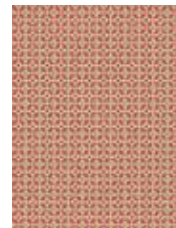
Pewter



Raspberry



Fern



Copper



Cornflower

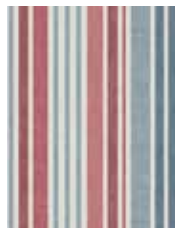
**HAWKSHEAD**  
 Pattern repeat:  
 H35cm x V35cm



Duckegg



Gold



Raspberry



Heather



Copper



Cornflower

**WINDERMERE**  
 Pattern repeat:  
 H17.5cm x  
 V35cm half  
 drop



Duckegg



Gold



Mist



Heather














Pistachio




Cornflower

For use as a guide only. Whilst the colours in this brochure have been reproduced as accurately as possible, we are restricted by the limitations of 4 colour litho printing and there may be slight differences when printed on fabric.

Product code	Product information	Suggested end use	Flame retardant specification	Care instructions
6910	Inherently Flame Retardant Panama Polyester 150cm 240gms +/- 5%	Curtaining	BS 5867 Part 2 Type B & C, IMO FTP Code 2010 Part 7, B1.	 Washable at 71°C for thermal disinfection
6999	Mezzo Inherently FR Brushed Panama Polyester 150cm 240gms +/-5%	Curtaining	BS 5867 Part 2 Type B & C, IMO FTP Code 2010 Part 7, B1.	 Washable at 71°C for thermal disinfection
6913	Inherently Flame Retardant Satin Polyester 142cm 220gms +/- 5%	Curtaining	BS 5867 Part 2 Type B & C, BS EN 13773 2003, BS 7175 Source 0, 5 & 7 for prisons, IMO FTP Code 2010 Part 7, M1, B1.	 Washable at 71°C for thermal disinfection
6994	Inherently Flame Retardant Trevira CS Polyester Nimbus Soft 140cm 230gms +/- 5%	Curtaining	BS 5867 Part 2 Type B & C, B1, M1, IMO FTP Code 2010 Part 7, BS 5815 Part 3G.	 Washable at 71°C for thermal disinfection
6934	Inherently Flame Retardant Quatro Polyester 142cm 220gms +/- 5%	Curtaining	BS 5867 Part 2 Type B & C, BS EN 13773 2003, BS 7175 Source 0, 5 & 7 for prisons, IMO FTP Code 2010 Part 7, M1, B1	 Washable at 71°C for thermal disinfection
6900	Inherently Flame Retardant Plain Weave 142cm 145gms +/- 5%	Bedding	BS 5867 Part 2 Type B & C, BS 5815 Part 3G, BS 7175 Source 0, 5 & 7 for prisons, M1, IMO FTP Code 2010 Part 7	 Washable at 71°C for thermal disinfection
6904	Inherently Flame Retardant Venus Polyester Dimout 150cm 250gms +/- 5%	Curtaining (Dimout)	BS 5867 Part 2 Type B & C, Classe Uno 9177, NFPA 701, IMO FTP Code 2010 Part 7, M1, B1, CA19	 Washable at 71°C for thermal disinfection
6911	Inherently Flame Retardant Polyester Blackout 142cm 240gms +/- 10%	Curtaining (Blackout)	BS 5867 Part 2 Type B, B1, NFPA 701, IMO FTP Code 2010 Part 7	 Iron on non-coated side
6896	Flame Retardant Blackout 25% Polyester/71% Acrylic Flock/4% Cotton 140cm 300gms +/- 5%	Curtaining (Blackout)	BS 5867 Part 2 Type B, M1, B1, IMO FTP Code 2010 Part 7	 Iron on non-coated side
6996	Libra FR Textured Blackout Polyester 140cm 310gms +/-5%	Curtaining (Blackout)	BS 5867 Part 2 Type B, IMO FTP Code 2010 Part 7	 Iron on non-coated side
9049	Flame Retardant Polyester Voile 150cm 55gms +/- 5%	Curtaining (Voile)	BS 5867 Part 2 Type B & C	
6978	FR Sentinel MRSA Polyester 137cm 350gms +/- 5%	Waterproof Upholstery 100,000 Martindale	BS 5852 Crib 5, IMO FTP Code 2010 Part 8	Routine Soap and warm water sponging is effective for ordinary soiling. Fresh stains, both water and oil based are easily removed using most water based household spray cleaning agents. Antiseptic cleaning agents can be used and more stubborn stains may require the use of a safe solvent such as Isopropyl Alcohol or Mineral Spirit. A half cup of household bleach for 5 litres of water can also be used as a useful disinfectant. Best cleaning method is "wipe and dry" technique, full immersion is not recommended.  Do not dry clean
6914	FR Enduracare MRSA Polyester Twill 140cm 350gms +/- 5%	Waterproof Upholstery 50,000 Martindale	BS 5852 Crib 5, IMO FTP Code 2010 Part 8	Will not support microbial growth including:- Aspergillus Niger - EColi - Altinata - Salmonella - Penicillium - Staphylococcus Aureus(MRSA) - Cladosporium Herbarism AATCC Test Method 147 1998 AATCC Test Method 30 1998.

Also featuring the below:

Product Name	Product Code	Width	Weight	Composition	Fire Standards	Care Instructions	Additional Information
MANHATTAN 28 colours	6708 6709	150cm 300cm	270gsm +/- 5%	100% Inherent FR Polyester	BS 5867 Part 2 B & C, NFPA 701 1 + 2, M1, B1, BS EN 13773 Class 1, Classe Uno, IMO FTP Code 2010 Part 7		Washable at 71°C for thermal disinfection
METRO 23 colours	7802	140cm	750gsm +/- 10%	2% PU, 78% PVC, 20% Poly/Viscose Woven Backing	BS 5852 Ignition source 5, IMO FTP Code 2010 Part 8	Please request a specification sheet for detailed instructions.	Anti-Microbial

Soapless detergent to be used on all of the above base cloths. No fabric conditioners/softeners or freshener sprays to be used as this can adversely affect FR properties. A tolerance of +/- 3% should be allowed for on pattern repeats as it can vary from quality to quality. Shade variations may occur batch to batch but we will endeavour to maintain good colour continuity. Please inspect all goods before cutting as no claims can be accepted or exchanges made once the material has been cut.

For detailed instructions please request a specification sheet.



Edmund  
Bell